

# Airwave News

## FM 88

## WBFH

Rockin' from the Hills of Oakland County

### A Look At WBFH

WBFH is owned by the Bloomfield Hills School District in Bloomfield Hills, Michigan. Students attending Andover and Lahser High Schools perform the functions and duties of the day-by-day operation of WBFH under the supervision of Station Manager/Faculty Advisor Pete Bowers.

WBFH is authorized to operate at the assigned frequency of 88.1 megahertz by The Federal Communications Commission. WBFH is a 10 watt, non-commercial, FM station licensed to The Board of Education with studios in both Andover and Lahser High Schools. Comments on our programming are welcome either by phone or mail.

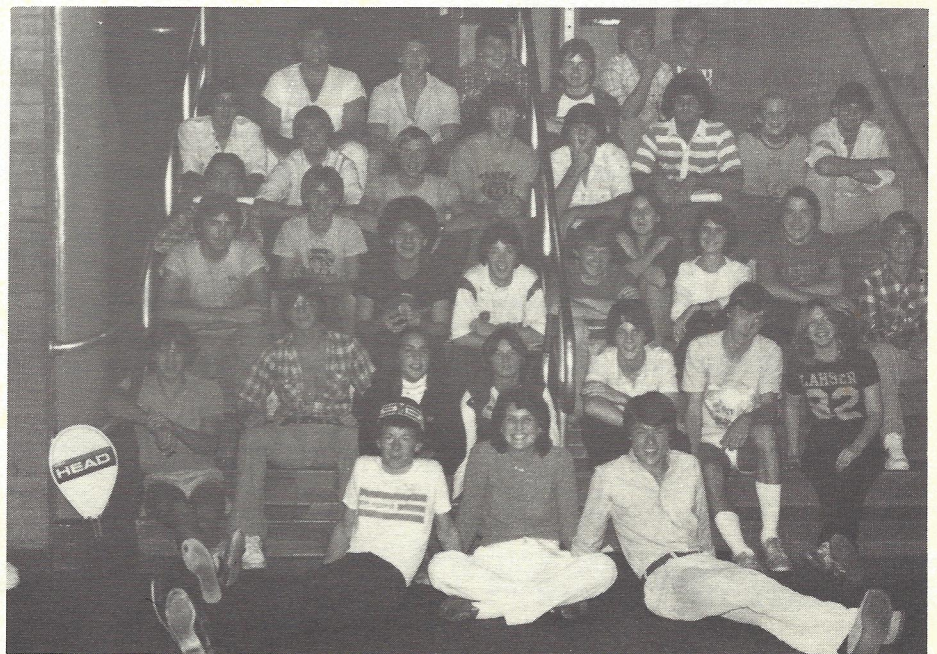
FRONT ROW: B. Walker, S. Savanyu, S.Lai

SECOND ROW: C. Hill, J. Harris, T. Bice, J. Brandow, C. Cornwall, B. Sharp, L. Pershing

THIRD ROW: M. Brooky, K. Schoen, P. Gaba, J. Tobin, S. Arnold, J. Dodge, J. Purtan, B. Moore, R. Blackwell

FOURTH ROW: D. Montgomery, P. Van Hart, P. Bowers, D. Galens, D. Stefkovich, D. Thomas, L. Hermanson, D. Nummer

TOP ROW: D. Eicher, A. Spiwak, K. Kohlman, E. Forrest, T. Cavanaugh, J. McDonald, R. Simpson



# 1980 WBFH STAFF

WBFH PERSONNEL

Pete Bowers, Station Manager  
 Mark Brooky, Assistant Manager  
 Irv Laing, Chief Engineer  
 Aaron Spiwak, Operations Manager  
 Steve Lai, Program Director  
 Dave Stefkovich, Music Director  
 Dave Stein, News Director  
 Jim McDonald, Production Director  
 Ted Moore, Public Affairs Director  
 Bryan Sharp, Sports Director  
 Kelly Kohlman, Assistant Sports Director  
 Rob Simpson, Assistant Sports Director  
 Ric Blackwell, Sales Manager  
 Tom Brown, Traffic Director  
 Tracey Bice, Public Relations Director  
 Jackie Purtan, Assistant P.R. Director  
 Diane Bee, Assistant P.R. Director  
 Paul Gaba, Assistant P.R. Director  
 Don Nummer, Student Engineer  
 Brad Walker, Bowco Productions  
 Lisa Pershing, Vice-President of The School of Broadcasting  
 Tim Cavanaugh, Business Manager  
 Joan Dodge, Art Director

OTHER STAFF MEMBERS INCLUDE: Scott Arnold, Julie Brandow,  
 Tony Bruce, Scott Cook, Chris Cornwall, Dave Eicher, Eric  
 Forest, Dave Galens, Jim Harris, Leslie Hermanson, John Kaplan,  
 Chris Hill, Dan Montgomery, Sharon Savanyu, Karl Schoen, Sue  
 Stanley, Dave Thomas, John Tobin and Pete Van Hartesveldt.

ADMINISTRATORS DIRECTLY INVOLVED WITH WBFH:

June Hamilton, Instructional Support Services Director  
 Duane Sheldon, Andover High School Principal  
 Dr. John Sanders, Lahser High School Principal  
 Dr. Fred D. Thorin, Superintendent  
 Dr. David A. Spencer, Deputy Superintendent

LICENSEES OF WBFH (SCHOOL BOARD)

Dorothy C. Collins.....President  
 Edward G. Fleischmann.....Vice-President  
 H. Eugene Weiss.....Secretary  
 Don F. Carlson.....Treasurer  
 Joan C. Ziegler.....Trustee  
 Eugene I. Owens.....Trustee  
 Lawrence E. Flora.....Trustee

PHONE-IN SHOWS ALLOW YOU TO PARTICIPATE ON THE AIR

The two programs on WBFH that you can participate in include "Sports-Scan" Wednesday from 4-5 p.m. and "What Do You Think?" Thursday from 4-5 p.m. Call 647-8510 with your opinions.

YOU CAN'T TELL THE PLAYERS WITHOUT A PROGRAM (SCHEDULE)

WBFH publishes a schedule of programs each week and posts them in all the Bloomfield Hills Schools, the Bloomfield Township Library, and the Recreation Department. If you would like one sent to your home, let us know about it.

WBFH'S 8 a.m. TO 4 p.m. PROGRAM SCHEDULE

MONDAY THRU FRIDAY	
TIME	PROGRAMMING
8:00	SIGN ON Commercial Free Music
8:30	FM 88 News
8:35	You The Public
9:00	Commercial Free Music...M,W,F Educational Records.....T Opus 88.....TH
9:40	Commercial Free Music
10:30	FM 88 News
10:35	Commercial Free Music
11:30	FM 88 News
11:35	Commercial Free Music
12:55	FM 88 News
1:00	Commercial Free Music
1:55	FM 88 News
2:00	Commercial Free Music
2:55	Sports
3:00	Commercial Free Music

DESCRIPTION OF SPECIAL

MORNING PROGRAMS

You The Public (Weekdays 8:45-9:00): Public affairs programming with tapes from the Saluki Radio Network and William Beaumont Hospital's "To your Good Health" tape series. Program titles include, "Windows on Aging," "Coping," "Starship Earth," and "More for Less."

Educational Records (Tuesday 9:00): Recordings of poetry, prose, or historical narrations from the Andover Media Center.

Opus 88 (Thursday 9:00): Classical music brought to you by the PTO Council and the Charles L. Bowers record library.

HAVE YOU GOT A PSA FOR US?

No, a PSA is not a disease, it stands for Public Service Announcement and, like a 'disease, you may have one and not even know it. As a service to our listening audience, WBFH airs several PSA's an hour providing important information about the community. If you are involved with a non-profit organization and you have an announcement for the general public, call us or write us about it and we'll get it on.

WE WANT FEEDBACK PLEASE

WBFH welcomes your comments and suggestions about our programming. As a public servant using equipment paid for through school funds, we appreciate any feedback you can give us, good or bad. Call or write us today...we're YOUR radio station.

WBFH-FM  
4200 Andover Rd.  
Bloomfield Hills, MI 48013  
Pete Bowers, Station Manager

# Afternoon Schedule

Art Work By Joan Dodge

	MONDAY	TUESDAY	WEDNESDAY	THURSDAY	FRIDAY
4-5 PM	MUSIC	GUEST DJ	MID-WEEK SPECIAL	WHAT DO YOU THINK?	FAALROOT
5-6 PM		GUEST DJ	SPORTS-SCAN	COMMUNITY ACTION	THE VERY BEST OF...
6-7 PM	TOP 30 COUNT-DOWN	MUSIC OR J.V. BASKETBALL	MUSIC	MUSIC OR HOCKEY	MUSIC OR J.V. BASKETBALL
8-9 PM	SUNNY SIDE UP	MUSIC OR VARSITY BASKETBALL	MUSIC	MUSIC OR HOCKEY	MUSIC OR VARSITY BASKETBALL
9-10 PM	WBTH				
10-11 PM	LOVE	SOFT	SIDE	OF	ROOR

DESCRIPTIONS OF SPECIAL PROGRAMS

Top 30 Countdown (Monday 6-8 p.m.): WBFH's top album rock songs played in order from #30 to #1.

Sunny Side Up (Monday 8-9 p.m.): Both side of a nationally top selling album played in its entirety without interruption.

WBFH Love (Monday 9-11 p.m.): Love songs and poetry with song dedications taken at 647-8510.

Guest DJ (Tuesday 4-6 p.m.): Your chance to be a disc jockey for an hour on WBFH. The first hour is reserved for upcoming WBFH staff and fundamentals of radio broadcasting DJ's but the second hour is open to anyone who applies. Call 647-8510 for details on how you can get on the air.

Mid-Week Special (Wednesday 4-5 p.m.): A musical theme each week such as "The top songs of the '70's," songs about cities, or songs recorded live in concert.

Sportscan (Wednesday 5-6 p.m.): Local, state, and national sports in an open forum with three members of the WBFH sports department as hosts. Call in your sports questions or comments at 647-8510.

What Do You Think? (Thursday 4-5 p.m.): A public forum for current events and a question of the week. Hosted by three WBFH staff members, call in your opinions at 647-8510.

Community Action (Thursday 5-6 p.m.): Interviews with Oakland County newsmakers by WBFH staff members ranging from high school principals to fashion models.

F.A.L.R.O.T. (Friday 4-5 p.m.): The initials stand for Friday Afternoon Live, Recorded or Taped. Master of Ceremonies, Pete Bowers, and the WBFH staff will entertain you with original comedy skits, poetry and musical talent from around the area.

The Very Best Of... (Friday 5-6 p.m.): The top songs of popular rock groups mixed with information about the artist/group.

The Soft Side of Rock (Tuesday thru Friday 10-11 p.m.): Mellow rock and interesting tidbits of information for our late night listeners.

Be A DJ (Seasonal, Saturday 9-noon): Area fourth, fifth and sixth graders on the air doing disc jockey shows, newscasts, sportscasts, interviews and skits.

*Lone Pine Vision Clinic*  
4331 ORCHARD LAKE RD.  
WEST BLOOMFIELD, MICHIGAN 48033  
851-0610

Eye Examinations  
Contact Lenses

Dr. Martin J. Levin  
Dr. Jerome L. McDowell  
Optometrists

# STROH'S

ICE CREAM AND CANDY STORE

We're located on 877 W. Long Lake at Telegraph

HOURS: M-Th 11 a.m. - 10 p.m.  
F-Sat 11 a.m. - 11 p.m.  
Sun 1 p.m. - 10 p.m.

HOT DELI SANDWICHES  
ICE CREAM CAKES AND PIES  
GIFTS AND MENTION THIS AD AND  
RECEIVE FREE JIMMIES ON CONE

Learn how to  
make up your  
face...free. by  
merle norman  
COSMETICS

TWELVE OAKS MALL, NOVI

November

20 Hockey---Andover vs. Lahser (R. Simpson, D. Nummer)

December

4 Hockey---Andover vs. Stephenson (R. Simpson, J. Tobin, T. Tobin)

5 Basketball---Andover vs. Lahser (S. Lai, K. Kohlman)

J.V. Basketball---Andover vs. Lahser (R. Blackwell, L. Barron)

11 Hockey---Lahser vs. Oak Park (D. Nummer, T. Bice, E. Borus)

12 Basketball---Andover vs. Berkley (S. Lai, B. Sharp)

J.V. Basketball---Andover vs. Berkley (C. Cornwall, T. Bruce)

18 Hockey---Lahser vs. Lathrup (D. Nummer, T. Bice, E. Borus)

January

8 Hockey---Andover vs. Franklin (R. Simpson, J. Tobin, T. Tobin)

9 Basketball---Lahser vs. Athens (K. Kohlman, C. Gettner)

J.V. Basketball---Lahser vs. Athens (K. Pietsch, L. Barron)

13 Basketball---B.H.J.H. vs. W.H.J.H. (D. Thomas, K. Miller)

16 Basketball---Andover vs. Seaholm (S. Lai, B. Sharp)

J.V. Basketball---Andover vs. Seaholm (R. Blackwell, E. Forest)

22 Basketball---B.H.J.H. vs. E.H.J.H. (K. Miller, P. Gaba)

Hockey---Andover vs. Oak Park (R. Simpson, J. Tobin, T. Tobin)

23 Basketball---Andover vs. Southfield (S. Lai, B. Sharp)

J.V. Basketball---Andover vs. Southfield (C. Cornwall, T. Bruce)

27 Basketball---Lahser vs. Brother Rice (K. Kohlman, C. Gettner)

J.V. Basketball---Lahser vs. Brother Rice (K. Pietsch, L. Barron)

30 Basketball---Lahser vs. Lathrup (K. Kohlman, C. Gettner)

J.V. Basketball---Lahser vs. Lathrup (P. Gaba, E. Borus)

February

3 Basketball---Lahser vs. Pontiac Northern (K. Kohlman, C. Gettner)

J.V. Basketball---Lahser vs. Pontiac Northern (K. Pietsch, L. Barron)

5 Hockey---Andover vs. Lathrup (R. Simpson, J. Tobin, T. Tobin)

10 Basketball---Andover vs. Ferndale (S. Lai, B. Sharp)

J.V. Basketball---Andover vs. Ferndale (R. Blackwell, E. Forest)

12 Hockey---Lahser vs. Churchill (D. Nummer, T. Bice, E. Borus)

17 Basketball---Andover vs. Kimball (S. Lai, B. Sharp)

J.V. Basketball---Andover vs. Kimball (C. Cornwall, T. Bruce)

19 Volleyball---Andover vs. Seaholm (D. Bee, J. Purtan)

20 Basketball---Lahser vs. Groves (K. Kohlman, C. Gettner)

J.V. Basketball---Lahser vs. Groves (P. Gaba, E. Borus)

24 Basketball---Lahser vs. Clarkston (K. Kohlman, C. Gettner)

J.V. Basketball---Lahser vs. Clarkston (K. Pietsch, L. Barron)

26 Hockey---Andover vs. Lahser (R. Simpson, D. Nummer)

27 Basketball---Andover vs. Troy (S. Lai, B. Sharp)

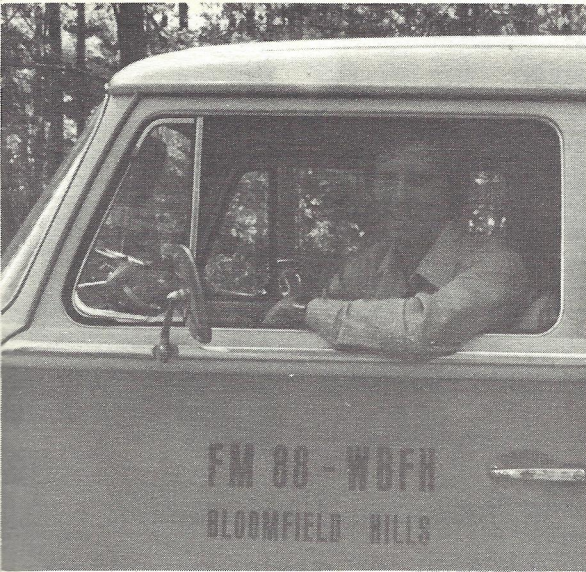
J.V. Basketball---Andover vs. Troy (R. Blackwell, E. Forest)

Junior High Basketball Tournament (D. Thomas, K. Miller, P. Gaba)

March

2 Volleyball---Lahser vs. W. Bloomfield (C. Muth, K. Kossuth)

2-7 High School District Basketball Tournament.



Mr. Bowers has been the station manager of WBFH since it was started in 1976. A 1971 graduate of Andover, Mr. Bowers went on to Central Michigan University in 1975 with a Bachelor of Applied Arts Degree with a broadcast and cinematic arts major and a photojournalism minor. Before taking the helm of FM 88, Pete worked at WCHP, WMHW-FM, and sent recorded sport features to WWJ, Detroit.

As station manager, Mr. Bowers is responsible for organizing and implementing the entire radio broadcasting program for the Bloomfield Hills schools including the supervision of the 40 WBFH staff members, teaching fundamentals of radio broadcasting at both Andover and Lahser, coordinating all 15 departments and monitoring all on-air programming over FM 88.

#### WBFH FACTSHEET

Call letters: W B F H  
Bloomfield Hills

Complete Mailing Address: WBFH-FM  
4200 Andover Road  
Bloomfield Hills, MI 48013

Phones: Business: (313) 647-1224 ext. 206  
Andover High School Studios: (313) 647-8510  
Lahser High School Studios: (313) 338-7440

Assigned Frequency: 88.1 MHz

Transmitter Output Power: 10 watts

Licensee: The Board of Education of Bloomfield Hills Schools

On the Air: October 1, 1976

Other Information: Commercial-free, educational, and stereo

Wire Service: United Press International

Format: Album oriented rock music  
Public Service Programming  
Local News and Sports

Member: Intercollegiate Broadcasting System  
Michigan Association of Educational Broadcasters

Tape Networks: Saluki Radio Network  
William Beaumont Hospital

Certification: Vocationally Certified by the State of Michigan  
Dept. of Vocational Education

Studo Locations: Southeast corner of Andover High School;  
Room 104, Lahser High School

Wiggs of Bloomfield Hills . . . since 1903, an outstanding collection of Traditional and Country Furniture interpreted for today's living.

Surround yourself with the grace and liveability of fine Traditional Furniture from over 58,000 sq. ft. of imaginative galleries and room displays. Accent your choices with the finest selections from our China, Crystal, Silver, Pewter and Gift Shop. Browse through our Early American Galleries; Rural English and Country French Settings; 18th Century, Queen Anne and Victorian Collections; Leather & Library Shop. Choose from Ethan Allen, Widdicomb, Henredon, White, Hekman, Century, Hitchcock, Woodmark and many more.

*Wiggs*



4080 TELEGRAPH RD. (at Long Lake Rd.)  
BLOOMFIELD HILLS • 644-7370

"ON THE AIR" is the official WBFH newsletter and is published three times a year. Copies are available upon request.

Editor...Ric Blackwell  
Author...Pete Bowers



Editor Ric Blackwell

WHAT'S IN THE FUTURE FOR WBFH?

A whole line-up of exciting spring sports.  
Our annual March of Dimes Marathon.  
More extensive local news coverage.  
Interviews from Oakland County's biggest newsmakers.  
And a spring newsletter telling you why WBFH is your radio station.

**WBFH-FM 88**  
**P.O. Box 816**  
**Bloomfield Hills**  
**Michigan 48013**

NON PROFIT  
ORGANIZATION  
U S POSTAGE

P A I D

PERMIT No 27  
Bloomfield Hills  
Michigan